

R O W A N



Gypsy Shawl

By Sarah Hatton





Gypsy Shawl

by Sarah Hatton



YARN

Kidsilk Haze Glamour

5 x 25gm

(photographed in Trance 284)

NEEDLES

1 pair 5mm (no 6) (US 8) needles

Pattern note: you may find it more comfortable as you begin to have more sts on your needles to change to a 5mm (no 6) (US 8) circular needle 60 cm long.

TENSION

18 sts and 30 rows to 10 cm measured over g st using 5mm (US 8) needles.

FINISHED SIZE

Completed shawl meas approx 255 cm (100½ in) at cast off edge.

SHAWL

Using 5mm (US 8) needles and scrap yarn, cast on 2 sts.

Work 2 rows g st.

Change to main yarn.

Work in g st for a futher 30 rows, turn work and pick up and knit 15 sts along row end edge of work.

Pull back provisional cast on and K the 2 cast on sts. 19 sts.

Row 1 (RS): K2, place marker, yfwd, K1, yfwd, place 2nd marker, K13, place 3rd marker, yfwd, K1, yfwd, place 4th marker, K2.
23 sts.

Row 2 and ever foll alt row: Knit.

Row 3: K2, slip marker, yfwd, K to next marker, yfwd, slip marker, work next 13 sts as row 1 of chart, slip marker, yfwd, K to last marker, yfwd, slip marker, K2. 27 sts.

Row 5: K2, slip marker, yfwd, *K2tog, yfwd, rep from * to within 1 st of next marker, K1, yfwd, slip marker, work next 13 sts as row 3 of chart, slip marker, yfwd, *K2tog, yfwd, rep from * to within 1 st of last marker, K1, yfwd, slip marker, K2. 31 sts.

Rows 7: K2, slip marker, yfwd, K to next marker, yfwd, slip marker, work next 13 sts as row 5 of chart, slip marker, yfwd, K to last marker, yfwd, slip marker, K2. 35 sts.

Row 9: K2, slip marker, yfwd, K to next marker, yfwd, slip marker, work next 13 sts as row 7 of chart, slip marker, yfwd, K to last marker, yfwd, slip marker, K2. 39 sts.

Row 11: K2, slip marker, yfwd, *K2tog, yfwd, rep from * to within 1 st of next marker, K1, yfwd, slip marker, work next 13 sts as row 9 of chart, slip marker, yfwd, *K2tog, yfwd, rep from * to within 1 st of last marker, K1, yfwd, slip marker, K2. 43 sts.

Row 13: K2, slip marker, yfwd, K to next marker, yfwd, slip marker, work next 13 sts as row 11 of chart, slip marker, yfwd, K to last marker, yfwd, slip marker, K2. 47 sts.

Row 15: K2, slip marker, yfwd, K to next marker, yfwd, slip marker, work next 13 sts as row 13 of chart, slip marker, yfwd, K to last marker, yfwd, slip marker, K2. 51 sts.

Row 17: K2, slip marker, yfwd, K to next marker, yfwd, slip marker, work next 13 sts as row 15 of chart, slip marker, yfwd, K to last marker, yfwd, slip marker, K2. 55 sts.

Row 18: Knit.

Rows 3 to 18 set the sts – central lace panel with eyelet and ridge patt at sides – and increases.

Cont as set until there are 383 sts, ending with row 2 of chart.

Work 3 rows g st, ending with **WS** facing for next row, cont as folls:

Row 1(WS): K2, *yfwd, K3, sl2tog, K1, P2sso, K3, yfwd, K1, rep from * to last st, K1.

Rows 2 and every foll alt row: Knit.

Row 3: As row 1.

Row 5: As row 1.

Row 7: As row 1.

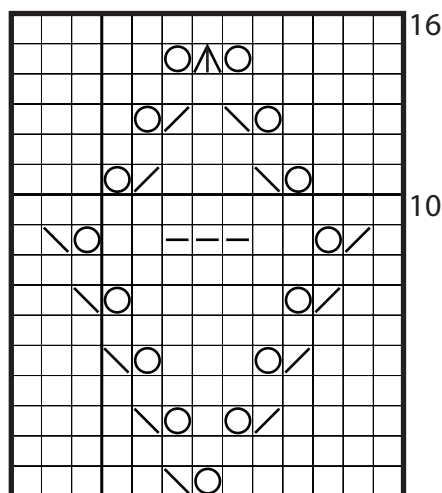
Row 9: K2, *yfwd, K9, yfwd, K1, rep from * to last st, K1. 459 sts.

Row 10: Knit.

Cast off using larger needles.

MAKING UP

Block out shawl, pinning cast off edge to give a lightly scalloped effect. Leave to dry completely.



key

□ K on RS and WS (g st)

○ yfwd

▧ sl 2 sts knitwise, insert left hand needle into front of these 2 sts and Ktog

▨ K2tog

△ sl 1, K2tog, pssso

≡≡≡ sl 3 sts wyib, bring yarn to front of work, sl same 3 sts back onto left hand needle, take yarn to back of work, K3.